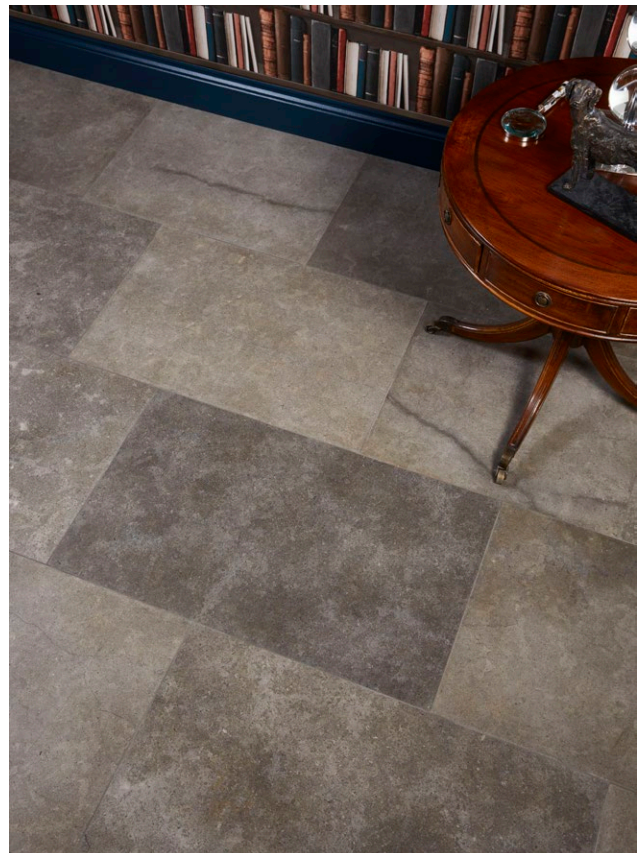


CORFE

LIMESTONE • HONED

With deep, moody tones of grey and charcoal with lots of natural fossils, this limestone is reminiscent of the very hard limestones found on the Isle of Purbeck in Dorset.



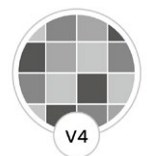
FORMAT (CM)

60 x Random x 1.5
Slab 2cm
Slab 3cm
Slab 4cm

AVAILABILITY

Usually in stock
Usually in stock
Usually in stock
Usually in stock

Suitable for interior floors,
sealing required.



TECHNICAL DATA

Petrographic Description

Pale grey on to pale blue grey, with occasional to frequent in places brown and grey brown spots, up to 1.5mm and commonly less than 1mm across, associated with occasional to frequent, irregular voids up to 1.5mm and commonly less than 1mm across, unevenly distributed, medium to coarse-grained (grains were peloids and/or aggregations of peloids), up to 10mm across, well to moderately compacted, fresh LIMESTONE, generally hard and robust (subjective assessment). The sample exhibited stylolitic seams seen across the thickness and on the principle surfaces of the slab sample, with which the spots and voids were apparently associated.

TEST	STANDARD	RESULT
Apparent Density	BS EN 1936 : 2006	2600kg/m ³
Open Porosity	BS EN 1936 : 2006	3.5%
Water Absorption at Atmospheric Pressure	BS EN 13755 : 2008	1.4%
Flexural Strength (3 Point)	BS EN 12372 : 2006	15.8MPa
Frost Resistance (56 Cycles)	BS EN 12371 : 2010	16.5MPa
Abrasion Resistance	BS EN 14157 : 2004	22.5mm
Thermal Shock Resistance	BS EN 14066 : 2013	16.2MPa
Slip Resistance (Dry)	BS EN 14231 : 2003	PTV 43
Slip Resistance (Wet)	BS EN 14231 : 2003	PTV 9

- ✓ Suitable for use with underfloor heating
- ✓ Suitable for use in wet areas

For any further information or advice, please contact our team.

INSTALLATION, CARE & MAINTENANCE ADVICE

Please refer to the installation guides on our website.

PRODUCT NOTES

This product is prone to efflorescence. To avoid this, store in a dry area, and use rapid or semi-rapid set adhesive, such as our Sarsen Home Premium Semi-Rapid Adhesive.