

SHERBORNE

PORCELAIN • MATT

A super high-definition porcelain perfectly replicating British stone, this tile can complement traditional or contemporary interiors. Available in natural, understated tones, for calming and impactful interiors.



MOSS



LIGHT

FORMAT (CM)

90 x 90 x 1

SOLD BY

2 pieces (1.62m²)

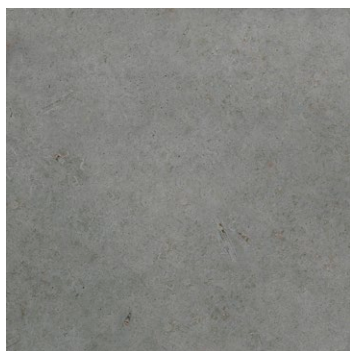
AVAILABILITY

Usually in stock

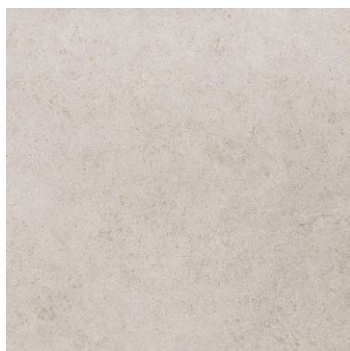
Suitable for interior walls and floors.

Slip rating: R10





MOSS



LIGHT

TECHNICAL DATA

| TEST | STANDARD | RESULT |
|--|-----------------|----------------------------|
| Dimensional Tolerances | EN ISO 10545-2 | Within standard tolerances |
| Water Absorption | EN ISO 10545-3 | ≤0.3% |
| Modulus of Rupture | EN ISO 10545-4 | >40N/mm ² |
| Breaking Strength | EN ISO 10545-4 | >2000N |
| Deep Abrasion Resistance | EN ISO 10545-6 | 175mm ³ |
| Resistance to Cracking | EN ISO 10545-11 | Resistant |
| Frost Resistance | EN ISO 10545-12 | Resistant |
| Chemical Resistance - High Concentrations | EN ISO 10545-13 | UG |
| Chemical Resistance - Low Concentration | EN ISO 10545-13 | UGL |
| Chemical Resistance - Households/Swimming Pool Chemicals | EN ISO 10545-13 | A |
| Stain Resistance | EN ISO 10545-14 | 5 |
| Resistance to Fire | EN 9239-1 | A1 |
| Slip Rating - Critical Angle | DIN 51097 | A |
| Slip Rating - Barefoot | DIN 51130 | R10 |

Rectified: YES NO

For any further information or advice, please contact our team.

INSTALLATION, CARE & MAINTENANCE ADVICE

Please refer to the installation guides on our website.