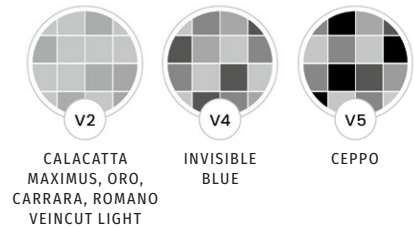


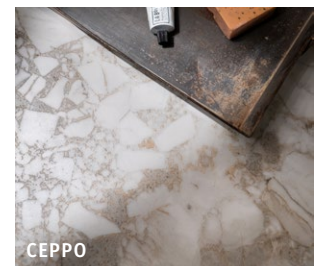
SCULPTURE

PORCELAIN • BRUSHED

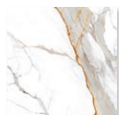
With a detailed three-dimensional effect which makes the veins stand out beautifully, this premium porcelain comes in an extra-large format tile, perfect for achieving minimal grout joints. With several beautiful marble effects available, Sculpture truly elevates a space.



| OPTION | FORMAT (CM) | SOLD BY | AVAILABILITY | 100 x 100 x 0.8cm format suitable for interior walls and floors. Slip rating: PTV 24 when wet |
|--------|-----------------|-------------------------------|------------------|--|
| Grande | 100 x 100 x 0.8 | 2 pieces (2m ²) | Usually in stock | 100 x 275 x 0.6cm format suitable for interior walls. |
| Ultima | 100 x 275 x 0.6 | 1 piece (2.75m ²) | Usually in stock | |



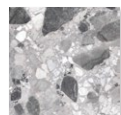
GRANDE



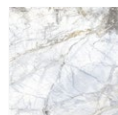
CALACATTA
MAXIMUS



CARRARA



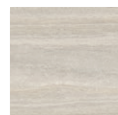
CEPPO



INVISIBLE
BLUE



ORO



ROMANO
VEINCUT LIGHT

ULTIMA



CALACATTA MAXIMUS



CARRARA



CEPPO



INVISIBLE BLUE



ORO



ROMANO VEINCUT LIGHT

TECHNICAL DATA

| TEST | STANDARD | RESULT |
|--|-----------------|----------------------------|
| Dimensional Tolerances | EN ISO 10545-2 | Within standard tolerances |
| Water Absorption | EN ISO 10545-3 | <0.5% |
| Modulus of Rupture | EN ISO 10545-4 | >35N/mm ² |
| Breaking Strength | EN ISO 10545-4 | >1300N |
| Deep Abrasion Resistance | EN ISO 10545-6 | <175mm ³ |
| Thermal Shock Resistance | EN ISO 10545-9 | Resistant |
| Resistance to Cracking | EN ISO 10545-11 | Resistant |
| Frost Resistance | EN ISO 10545-12 | Resistant |
| Chemical Resistance - High Concentrations | EN ISO 10545-13 | HA |
| Chemical Resistance - Low Concentration | EN ISO 10545-13 | LA |
| Chemical Resistance - Households/Swimming Pool Chemicals | EN ISO 10545-13 | A |
| Stain Resistance | EN ISO 10545-14 | 5 |
| Resistance to Fire | EN 9239-1 | A1 |
| Scratch Resistance | EN 101 | 5 |
| Dynamic Coefficient of Friction | ANSI A137 | >0.42 |

Rectified: YES NO

For any further information or advice, please contact our team.

INSTALLATION, CARE & MAINTENANCE ADVICE

Please refer to the installation guides on our website.