

PROVENCE

PORCELAIN • MATT OR TEXTURED

Replicating slight undulations found in French antique flagstones, these tiles reflect the idea of the passage of time leaving its mark. With a tonal range suitable for contemporary, natural interiors and heritage properties alike.



Image: Langton Homes

TALCO 60.4 X 90.6 X 1CM



CENERE PAVING



CENERE, MIX OF ALL THREE 1CM THICK SIZES



TALCO PAVING

FORMAT (CM)

- 30.2 x 60.4 x 1
- 60.4 x 60.4 x 1
- 60.4 x 90.6 x 1
- 60.4 x 90.6 x 2 (paving)

FINISH

- Matt
- Matt
- Matt
- Textured

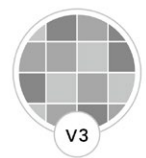
SOLD BY

- 6 pieces (1.094m²)
- 4 pieces (1.459m²)
- 3 pieces (1.641m²)
- 1 piece (0.547m²)

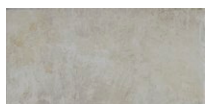
AVAILABILITY

- Usually in stock
- Usually in stock
- Usually in stock
- Usually in stock

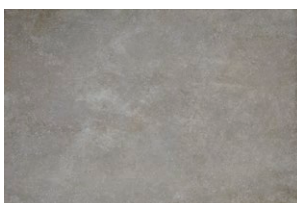
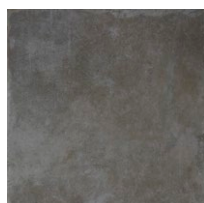
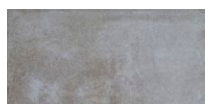
1cm thick tiles: Suitable for interior walls and floors.
Slip rating: R10
Paving: Suitable for exterior floors, pool surrounds.
Slip rating: R11



TALCO



CENERE



30.2 x 60.4 x 1cm

60.4 x 60.4 x 1cm

60.4 x 90.6 x 1cm

60.4 x 90.6 x 2cm (paving)

TECHNICAL DATA

TEST	STANDARD	RESULT
Dimensional Tolerances	EN ISO 10545-2	Within standard tolerances
Water Absorption	EN ISO 10545-3	1cm thick tiles: ≤0.5% Paving: 0.2%
Modulus of Rupture	EN ISO 10545-4	≥35N/mm ²
Breaking Strength	EN ISO 10545-4	1cm thick tiles: ≥1300N Paving: 10000N
Deep Abrasion Resistance	EN ISO 10545-6	1cm thick tiles: ≤175mm ³ Paving: 145mm ³
Superficial Abrasion Resistance	EN ISO 10545-7	Class 4
Resistance to Cracking	EN ISO 10545-11	Resistant
Frost Resistance	EN ISO 10545-12	Resistant
Chemical Resistance - High Concentrations	EN ISO 10545-13	Resistant
Chemical Resistance - Low Concentration	EN ISO 10545-13	Resistant
Chemical Resistance - Households/Swimming Pool Chemicals	EN ISO 10545-13	1cm thick tiles: UB Paving: UA
Stain Resistance	EN ISO 10545-14	≥3
Resistance to Fire	EN 9239-1	A1
Slip Rating - Critical Angle	DIN 51097	Paving: A+B
Slip Rating - Barefoot	DIN 51130	1cm thick tiles: R10 Paving: R11
Dynamic Coefficient of Friction	ANSI A137	Paving: >0.4

Rectified: YES NO

For any further information or advice, please contact our team.

INSTALLATION, CARE & MAINTENANCE ADVICE

Please refer to the installation guides on our website.