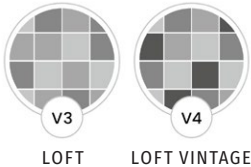


# LOFT

PORCELAIN • SATIN

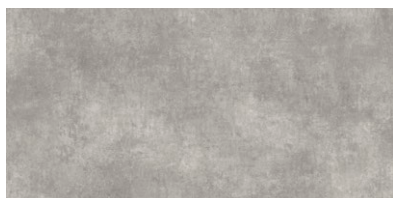
A simple, versatile range of concrete-effect tiles which pair beautifully with any furniture styling and contrasting tile choices. Loft Vintage contains a unique blend of geometric patterns faded together and overlaid onto a concrete backdrop - blurring the lines between traditional and contemporary design.



OPTION	FORMAT (CM)	SOLD BY	AVAILABILITY	Suitable for interior walls and floors. Slip rating: R9
Grey, Pearl, Vintage Grey, Vintage Pearl	60 x 60 x 1	4 pieces (1.44m <sup>2</sup> )	Usually in stock	
Grey, Pearl	60 x 120 x 1	2 pieces (1.44m <sup>2</sup> )	Usually in stock	



GREY 60 X 60 X 1CM



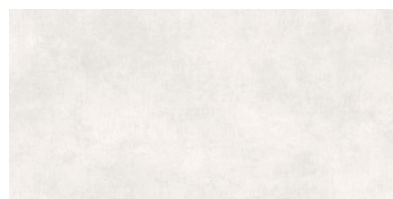
GREY 60 X 120 X 1CM



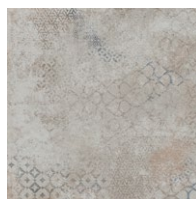
GREY VINTAGE  
60 X 60 X 1CM



PEARL 60 X 60 X 1CM



PEARL 60 X 120 X 1CM



PEARL VINTAGE  
60 X 60 X 1CM

## TECHNICAL DATA

TEST	STANDARD	RESULT
Dimensional Tolerances	EN ISO 10545-2	Within standard tolerances
Water Absorption	EN ISO 10545-3	≤0.5%
Modulus of Rupture	EN ISO 10545-4	35-45N/mm <sup>2</sup>
Breaking Strength	EN ISO 10545-4	1600-2400N
Superficial Abrasion Resistance	EN ISO 10545-7	Class 4
Linear Thermal Expansion	EN ISO 10545-8	<7.0 x 10 <sup>-6</sup> °C <sup>-1</sup>
Thermal Shock Resistance	EN ISO 10545-9	Resistant
Resistance to Crazeing	EN ISO 10545-11	Resistant
Frost Resistance	EN ISO 10545-12	Resistant
Chemical Resistance - High Concentrations	EN ISO 10545-13	A
Chemical Resistance - Low Concentration	EN ISO 10545-13	Resistant
Stain Resistance	EN ISO 10545-14	5
Resistance to Fire	EN 9239-1	A1
Slip Rating	DIN 51130	Class 1
Slip Rating - Critical Angle	DIN 51097	C
Slip Rating - Barefoot	DIN 51130	R9

Rectified: YES  NO

For any further information or advice, please contact our team.

## INSTALLATION, CARE & MAINTENANCE ADVICE

Please refer to the installation guides on our website.