

CA' PIETRA

MINÉRALE



INSTALLATION GUIDE

2024 EDITION

Our Minérale Click, No Stick tiles utilise innovative 5G® or I4F® fold-down locking systems with built in underlay (except the New Forest Herringbone, which will require an underlay to be installed for the best result).

The 'floating floor' system makes installation fast and easy, and results in cost savings in labour and materials. By eliminating adhesive and grout you can also walk on your floor immediately after completing the installation. Win-win.

The glue-free mechanical locking system is strong and robust, creating a continuous floor of planks that will not move apart.

Just make sure that you don't lay Minérale outside, use it in conservatories or install large heavy objects (such as a kitchen) on top of the flooring. Minérale also needs space to breathe so we ask that you don't fix anything around it, as it needs space to expand and contract.

CONTENTS:

Page 2: Product Advice

Page 5: Installation Guide
- Italian Collection

Page 6: Installation Guide
- New Forest Planks

Page 8: Installation Guide
- New Forest Herringbone

Page 12: Installation tips
and aftercare advice

PRODUCT ADVICE BEFORE PURCHASE

Minérale can be installed over ambient or heated floors of concrete and anhydrite screeds, stable existing wood floors, chipboard, ply, panels, stone, marble, terrazzo, metal, PVC, LVT, and linoleum. You must ensure they are dry, smooth, hard and flat.

Minérale is not suitable for garden rooms/ conservatories and external spaces.

The Pure Gloss finish is more susceptible to stretching in heavy use areas. This collection is suitable for light commercial

use, please do not use it in areas subject to rolling loads or other heavy use.

Our Minérale Italian Collection and the New Forest Planks have an integral underlay, and no additional underlays should be used.

We would recommend installing a soundproofing underlay layer below the New Forest Herringbone tiles for the best result.

Minérale must remain a free floating installation; do not fix any items through

the flooring, or build fitted units on top of the floor. Minérale should be the last thing installed into a room.



Expansion gaps must be allowed at the perimeter of the room and around all fixed objects. For rooms up to 10m length, this gap should be at least 5mm and can be concealed underneath skirting boards or with a beading. We recommend 10mm when rooms are larger than 10m in length, and also where direct

sun strikes, or temperature fluctuations are expected.

If used in multiple rooms the floor should always be broken to allow an expansion gap at each doorway.

Suitable for use with electric and water underfloor heating systems, provided the systems are embedded in screed or beneath a floating timber base or similar as recommended by the underfloor heating manufacturer. Note: Surface temperature of the floor should not exceed 27°C.

Acclimatisation: Always store the boxes of product flat and leave them in the room to be fitted for 24 hours to acclimatise to the temperature of installation (18-25°C). If tiles have been stored within this temperature range acclimatisation time can be reduced.

HOW MANY PACKS OF MINÉRALE DO I NEED?

Follow these simple steps to calculate how many packs of Minérale you will need for your project.

1. Measure the length and width of the room in metres and multiply the two values together. This will give you the square metre coverage. For irregular shaped rooms,

try breaking the area into smaller rectangles. Calculate the area of each rectangle then add the values together.

2. We recommend adding an additional 10% to the total area to allow for cuts and wastage during the installation process. To calculate this, multiply

the total square metre coverage by 1.1.

3. Divide this total by the square metre coverage of a full pack to calculate how many packs of Minérale you will need. Always round this number up to save running out of tiles.

Note: We recommend ensuring that your calculations are correct to avoid ordering later down the line, as you may find a slight variation in colours due to batch numbers.

FLOOR & ROOM PREPARATION

Preparation is key before you begin to install Minérale to ensure a long-lasting finish.

Stack the unopened packs of tiles in the room where they are to be laid for at least 48 hours prior to laying. This will allow them to acclimatise to room temperature and humidity.

For areas larger than 400m², expansion joints must be allowed for across the area.

Ensure that the subfloor is smooth, flat and within a tolerance of 6mm over a 3m area, this can be checked with a straight edge or spirit level.

If the subfloor is a new screed it will need to be fully dry and cured before installing Minérale.

Remove any existing carpet, underlay, panels, or vinyl flooring before you begin installation. If you are installing over floorboards, ensure they are firmly secured, flat and that there are no protruding nails or screws.

If you are laying Minérale on a particularly uneven or unstable floor you will need to over-board it or apply a self-levelling screed to level or stabilise the surface. Small sharp steps should also be smoothed out.

Do not install heavy items such as kitchen cabinets and other fitted furniture on top of Minérale, the tiles can be installed after. If they are to be installed first, mark out on the floor where they will go and avoid laying tiles in these areas. Allow 8mm for expansion where items are in contact with the floor,

then carefully protect the floor to avoid damage to the tiles.

Minérale should be laid with an expansion gap of 8mm at all edges where the product meets a boundary. You may wish to remove your skirting boards and re-attach them afterwards (these must be fitted with at least a 1mm gap between the skirting boards and the Minérale tiles).

Ensure the floor is clean and dry – the moisture content should be < 2.5%.



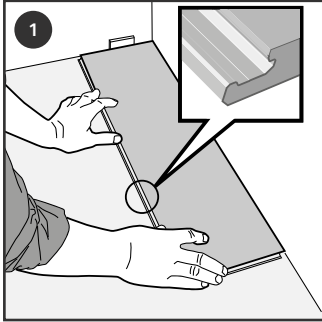
Ashurst Plank

INSTALLATION: ITALIAN COLLECTION

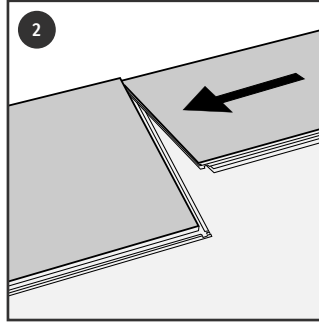


FIRST ROW:

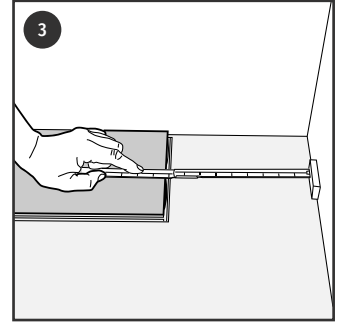
It is likely that you will have to cut down the width of the last row of tiles, and this should be no less than 50mm. You may need to cut down the width of the first row of tiles to allow for this.



Start by laying your first tile in a corner of the space, with an 8mm spacer between its short end and the wall. Don't use spacers along the long edge at this stage.

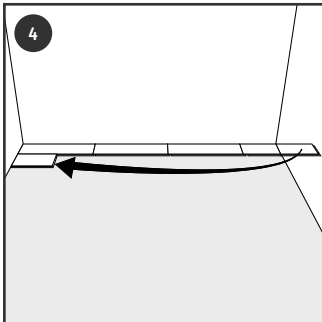


Place the short end of the second tile against that of the first tile, angling it into the locking strip and gently flattening it. Press gently on the joint between the tiles to seat them. Repeat this for the rest of the first row of tiles.



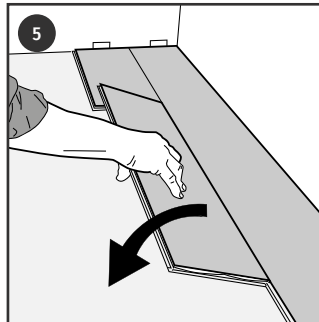
To measure up for the last tile in the row, place an 8mm spacer against the wall and measure the distance between the spacer and the previous tile.

SECOND ROW:



To create staggered joints, cut down the first tile of the second row. This should be a minimum length of 400mm.

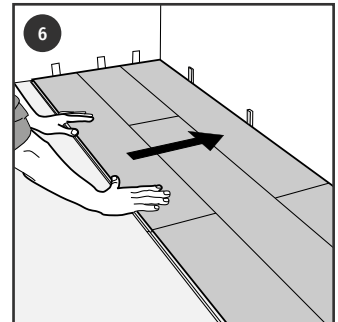
Do not stack bond the Italian collection.



Place an 8mm spacer between the short end of this tile and the wall and slot the back edge of the tile into the locking strip of the first row tiles, holding it at an angle of approximately 30°. Slide it sideways until it meets the spacer, then fold it down and press it into place.

Repeat this sequence for the second row of tiles.

REST OF FLOOR:



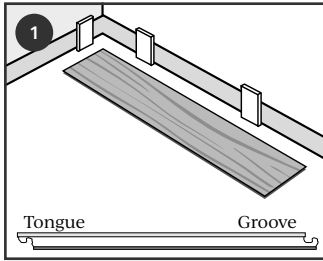
Once you have laid 1-2 rows of tiles the floor should be fairly rigid. Now you can slide it slightly away from the far wall, insert 8mm spacers and then push the tiles back into position.

Continue for the rest of the floor.

INSTALLATION: NEW FOREST PLANKS



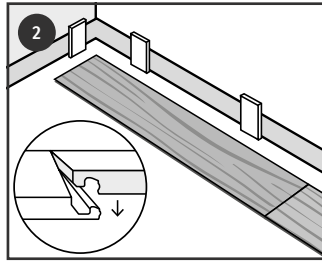
FIRST ROW:



Set spacers to allow a minimum gap of 6mm around the perimeter of the subfloor for movement or product expansion.

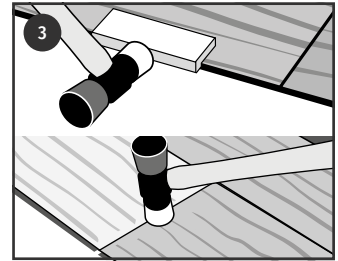
Do not remove the spacers until the installation is complete. The expansion gaps should be covered by skirting boards.

Loose lay the first row of planks in order to obtain a better visual of the installation and to avoid having a plank less than 20cm on the opposite end of the room. If you end up with a plank less than 20cm, cut the first plank accordingly to properly balance the room.



Installation should start in a left-hand corner and proceed from the wall with the tongue facing the wall. Position the first plank 15cm from the starting wall but not up against the spacers. The entire row will be moved against the spacers in a later step.

Interlock the next plank at the end joint of the first plank by inserting the tongue into the groove of the adjoining planks.

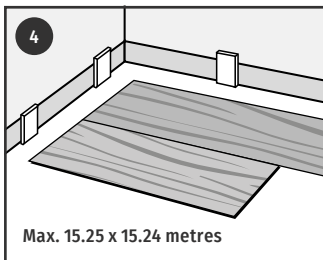


Square the joints by tapping the long edge with the profiled tapping block and soft-faced hammer. Next, lightly tap down on top of the plank at the short joint with the soft-faced hammer. Continue this method to finish the first row.

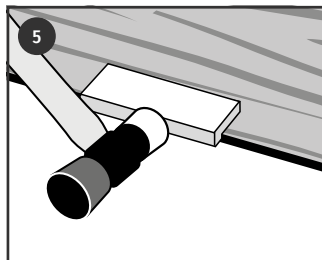
Cut the last piece of the row to fit, and allow for the 6mm expansion gap (if you have not already done so). Install as below.

Note: To cut a plank, simply measure and mark the plank. Then, use a straight edge and utility knife to score and snap. You will also need to back-cut the under pad on the bottom of the plank. If you have difficulty using this method, you can use a jig saw, circular saw or mitre saw.

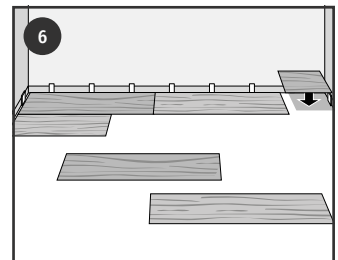
SECOND ROW AND REST OF FLOOR:



Cut the first plank of the second row to two-thirds its length or make sure there will be at least a 20cm stagger between end joints. Angle the long tongue edge of the plank into the long groove edge of the first plank. Drop and lock the end joints together.

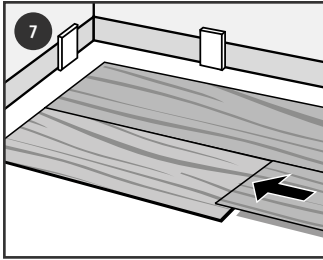


Make sure there are no gaps and, if necessary, tap along the long groove edge using a soft-faced hammer and a protective tapping block to ensure a tight fit. Do not tap the short end into place if the long joint is not properly engaged, as doing so can cause damage to the tongue and groove.

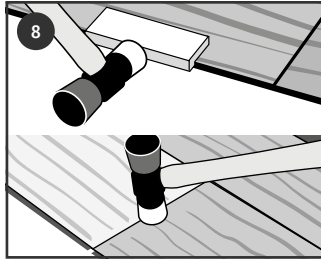


Attach the second plank by connecting the long side to the first row and sliding it up to the short end of the first plank. Check that the long joints of the planks are properly engaged and then press the short joint into place with your fingers.

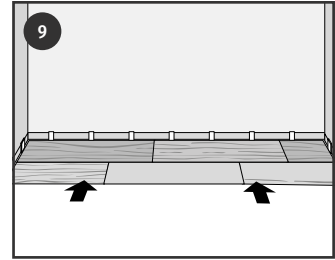
Note: When starting a new row, you can use the cut piece from the previous row, as long as it is more than 20cm and the stagger between seams still is greater than 20cm.



Continue to square the joints by tapping the long edge with the profiled tapping block and soft-faced hammer. Then, lightly tap down on top of the plank at the short joint with the soft-faced hammer. Continue installing the remainder of the row in this fashion.

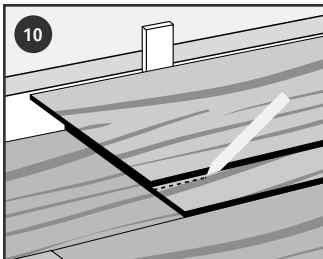


After installing the last piece of the second row, slide the entire assembly against the spacers on the starting wall, maintaining the required 6mm expansion gap.

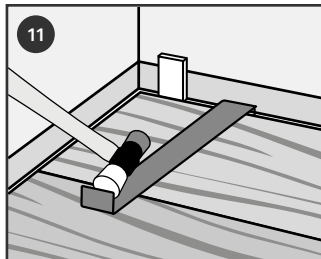


Install remaining rows, one row after the other, and maintain the required 8" (20.3cm) stagger throughout the install. Tap and square each plank.

LAST ROW:

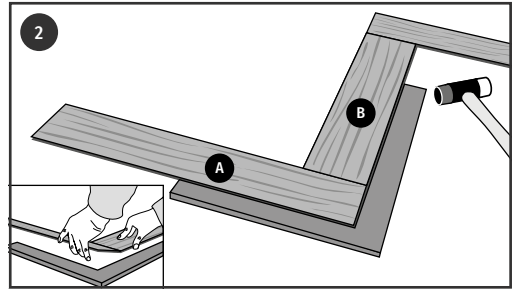
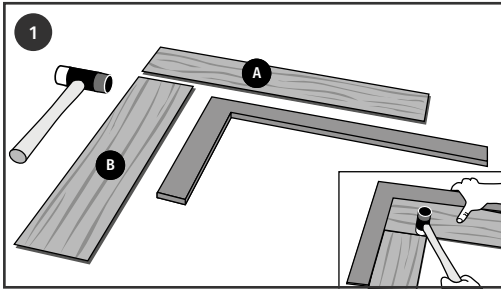


Most often the entire length of the last row will need to be cut so that it is narrow enough to fit the remaining space. Cut the first plank of the last row to length (if necessary to follow stagger pattern). Place directly on top of the previously installed row. Then, take another plank and place it against the wall on top of the plank to be cut for width. Mark the plank (lengthwise), and cut to size. Remember to allow for the 6mm expansion gap against fixed objects.



Install the plank with the cut side always facing the wall. Use a pull bar to lock the long edges together. Do not use the pull bar on the short edges.

INSTALLATION: NEW FOREST HERRINGBONE



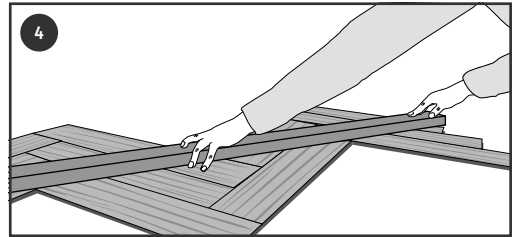
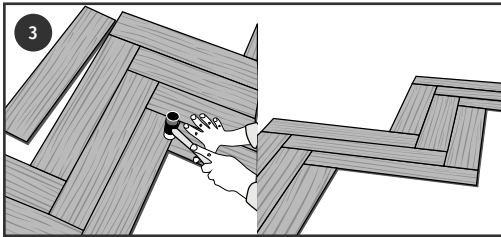
Please note: Our New Forest Herringbone collection does not come with built-in underlay, we would advise you to install an underlay on to the floor surface before beginning installation, for best results.

Begin installation a little way away from any walls, with the direction of the herringbone facing which way you would prefer. Choose an area where there is an internal 90 degree corner.

Take one A plank and one B plank. Drop the short side of plank B into the top of the long side of plank A and use a

square to align the two planks perfectly. Then tap gently with a soft mallet to lock together.

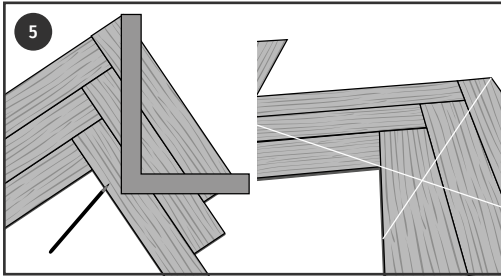
Angle in the long side of a third plank, plank type A, into the short side of the second plank (B). Use a square to align the two. Make sure that the groove side of the plank is always facing inwards. Continue laying in this way for the entire first row. Make sure that the planks are not touching a side wall to one side.



Add a second row to the exposed long edge of the first row to make the second row, and add rows until you have about three or four rows completed. Alternate every row with Plank type A or B.

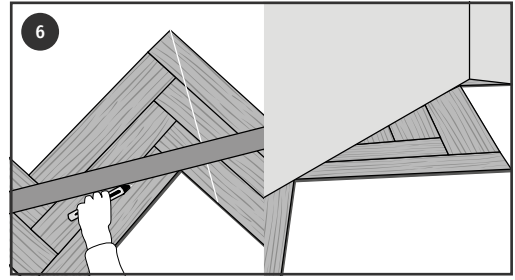
When you are approaching a wall, use a straight edge and mark a line parallel to the wall in question. The line should be in line with the bottom of the v-shape of the herringbone pattern.

Using a square, draw a perpendicular line to the one you have already marked, as shown. This will be your corner. Make sure that the line lines up with the inner corner of the short ends of the tile.



Cut the planks to this line, using a utility knife or a circular saw if possible. This should create two straight edges from which you can continue laying.

When this section is complete, add two full new rows to give the floor rigidity then pull all pieces back from all walls by at least 6mm. Use packers between the edge of the tiles and the wall to allow for an expansion joint.



All pieces which meet a wall will need to be cut and it is important to work each row separately, starting from one cut end and continuing to the other end. Always measure the planks carefully before cutting. Remember to allow for a 6mm expansion joint.



Burley Herringbone

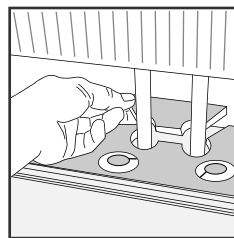
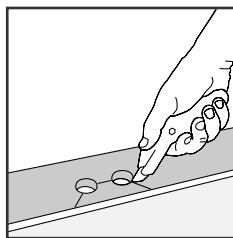
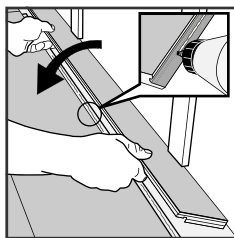
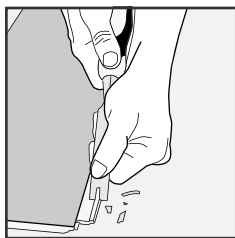
INSTALLATION ADVICE

FITTING AROUND IRREGULARLY SHAPED OBJECTS

Make a template to fit around pipes or irregular shaped objects. Place the pattern upon the plank and trace. Cut along the trace lines using a utility knife or jig saw, and lay plank. Alternatively, a hole saw can be used when cutting planks that are to fit around pipes.

Note: Be sure to leave a minimum of 6mm expansion space around all fixed objects, cabinetry, and metal door jambs.

OBSTRUCTIONS AND PIPEWORK



If obstructions prevent you from inserting tiles into the locking strip in the conventional manner, remove the vertical part of the locking strip with a chisel and use adhesive to hold the tile in place.

To fit tiles around pipes, drill a hole in the tile that is twice the diameter of the pipe. Use a utility knife to remove a section from the tile to allow it to be laid around the pipe, then insert the removed section of tile behind the pipe.



FINISHING

Remove spacers. Cover expansion spaces with skirting or other types of trim, being sure to maintain at least 1mm between the trim and skirting as an expansion gap. Nails should go into wall, not the floor.

Fill any expansion spaces around potentially wet areas (such as refrigerators, or bathtubs) with waterproof silicone sealant.

Remember, the use of expansion joints is required when installing Minérale New Forest in a room or area that is larger than 15m in any direction, so that the floor is separated into sections that are no larger than 15 x 15m per section.

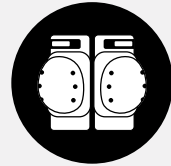
Save and protect any leftover planks. Do not discard, as they are colour-matched to your floor. They can be used for replacement in the event you need to replace a plank in the future.

SAFETY

Always wear safety goggles and a dust mask when sawing or drilling Minérale.

Cut or drill Minérale outdoors if possible or ensure your room is well ventilated.

For extra comfort and protection, we recommend wearing knee pads.



Note: For video guides to installation, please visit the I4F and 5G fold down websites.

AFTERCARE

As with any floor, over time the surface will wear with use, here are a few tips to help you care and prolong the life of your Minérale floor.

Do not drag heavy objects or anything with sharp edges over the floor, always lift to move them.

CLEANING

Brush or vacuum the surface a few times a week to remove dust and particles that might cause scratching underfoot.

Only use a damp mop and mild detergent to wash Minérale floors as required.

While Minérale is waterproof, we recommend mopping up any spills immediately.

PROTECTION

Apply felt or plastic pads to the bottom of furniture legs to protect the surface of the panels.

Using entrance mats to remove grit and moisture from shoes before contact with the floor will help with maintenance and wear.

WARRANTY

We are so confident that our Minérale collection will stand the test of time that we offer a 10 year warranty on the quality of the Minérale product, We do not cover any issues caused by poor installation.

To register your warranty and view terms & conditions, head to: capietra.com/minerale

DELIVERY RATES

	Mainland UK	Scotland	Highlands & Islands
Single Box Rate*	£45.60 Inc VAT	£45.60 Inc VAT	£45.60 Inc VAT
Pallet Rate Up to 45m ²	£74.75 per pallet Inc VAT	£131.10 per pallet Inc VAT	£172.50 per pallet Inc VAT

*Anything above 1 box will be charged at a pallet rate

CA' PIETRA

MINÉRALE

DISCOVER THE COLLECTION

[CAPIETRA.COM](https://www.capietra.com)